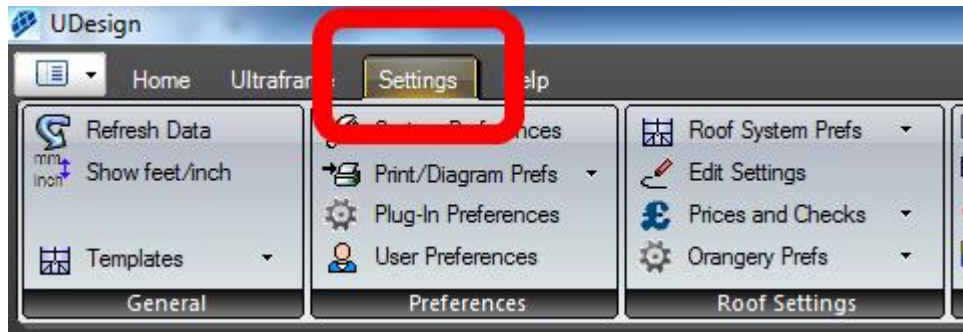
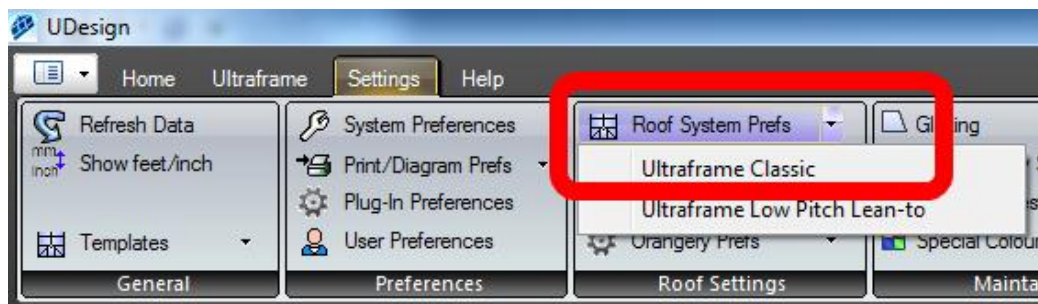


How To Create A Tiled Roof In Udesign

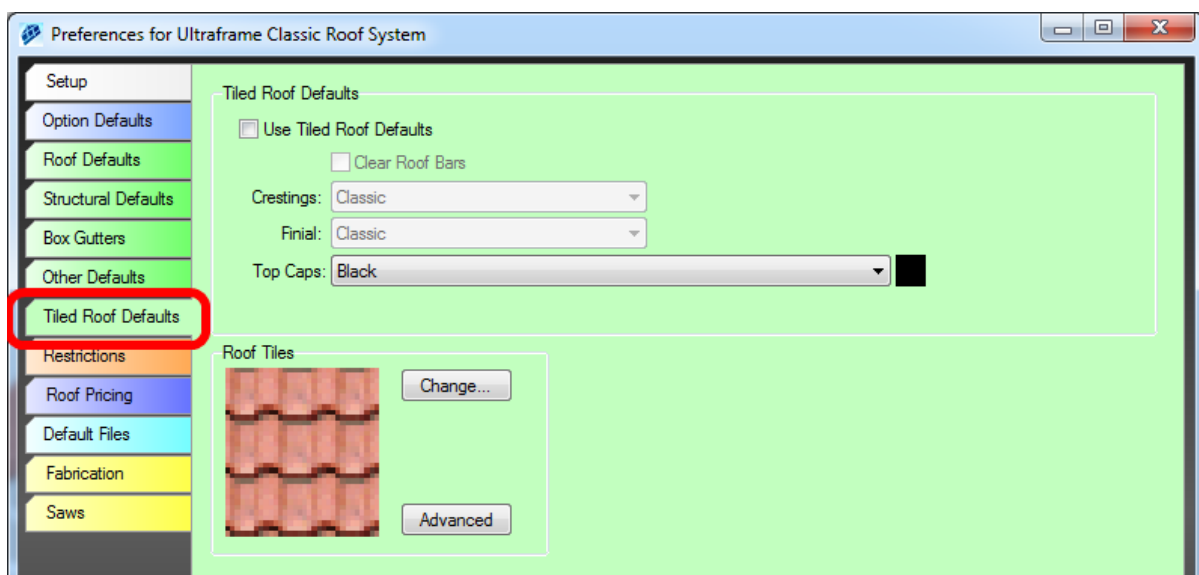
1. In UDesign click on the [Settings](#) tab.



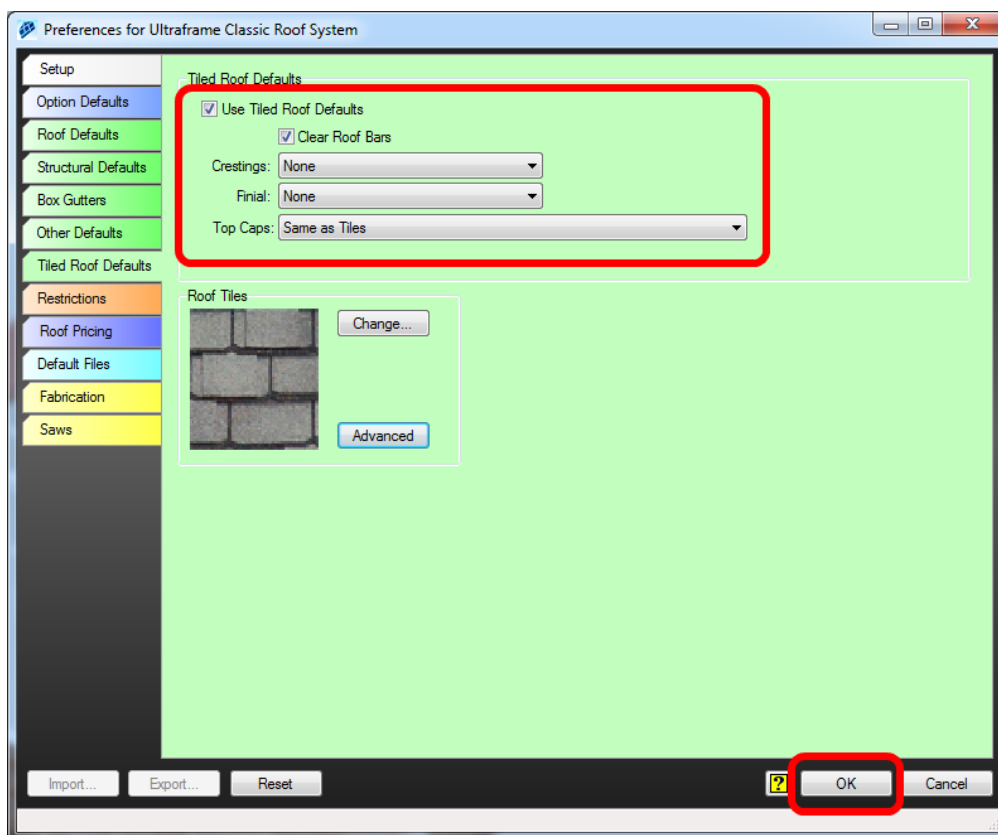
2. Click on the [Roof System Prefs](#) and select [Ultraframe Classic](#).



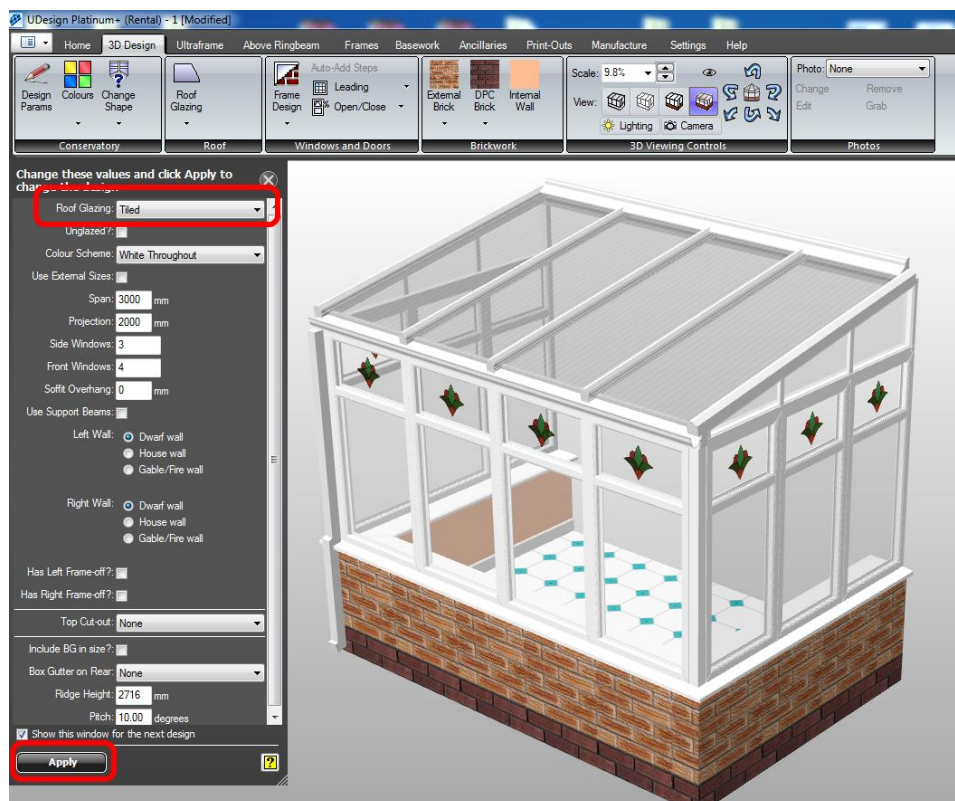
3. Select the [Tiled Roof Defaults](#) tab.



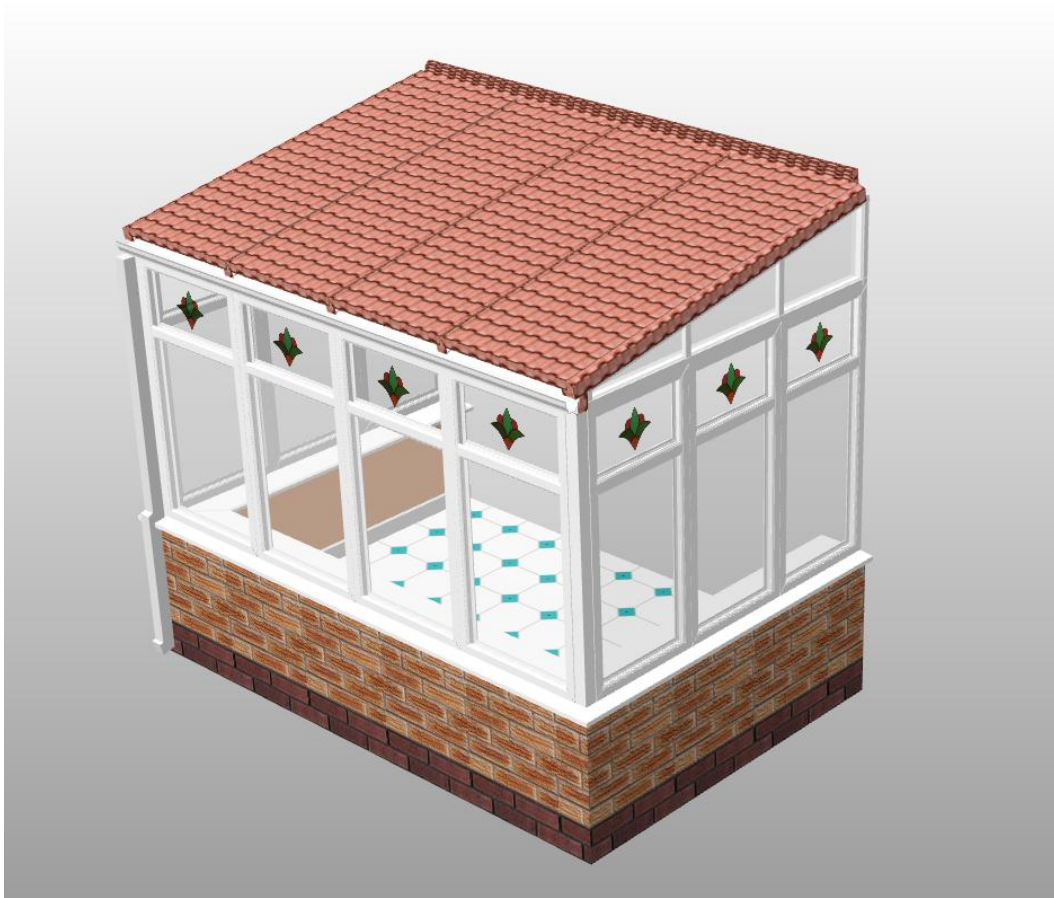
4. Tick the **Use Tiled Roof Defaults** & tick the **Clear Roof Bars**. Select **None** for both **Crestings** and **Finial**. You can also choose the default **Top Caps** colour. Click **Ok**.



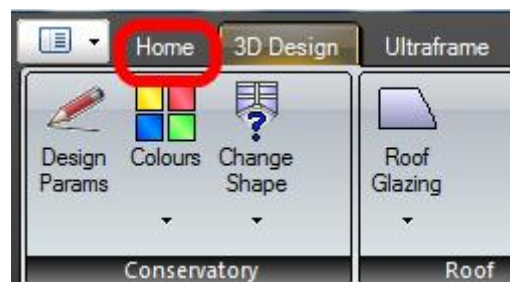
5. Create a conservatory. On the **Roof Glazing** select **Tiled** then **Apply**.



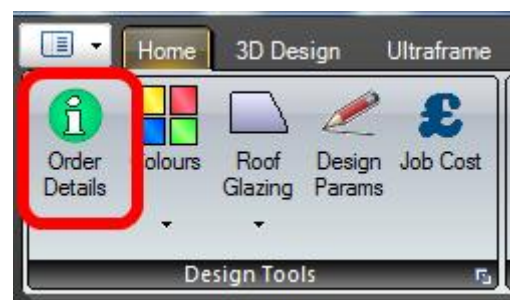
6. A “Tiled Conservatory Roof”.



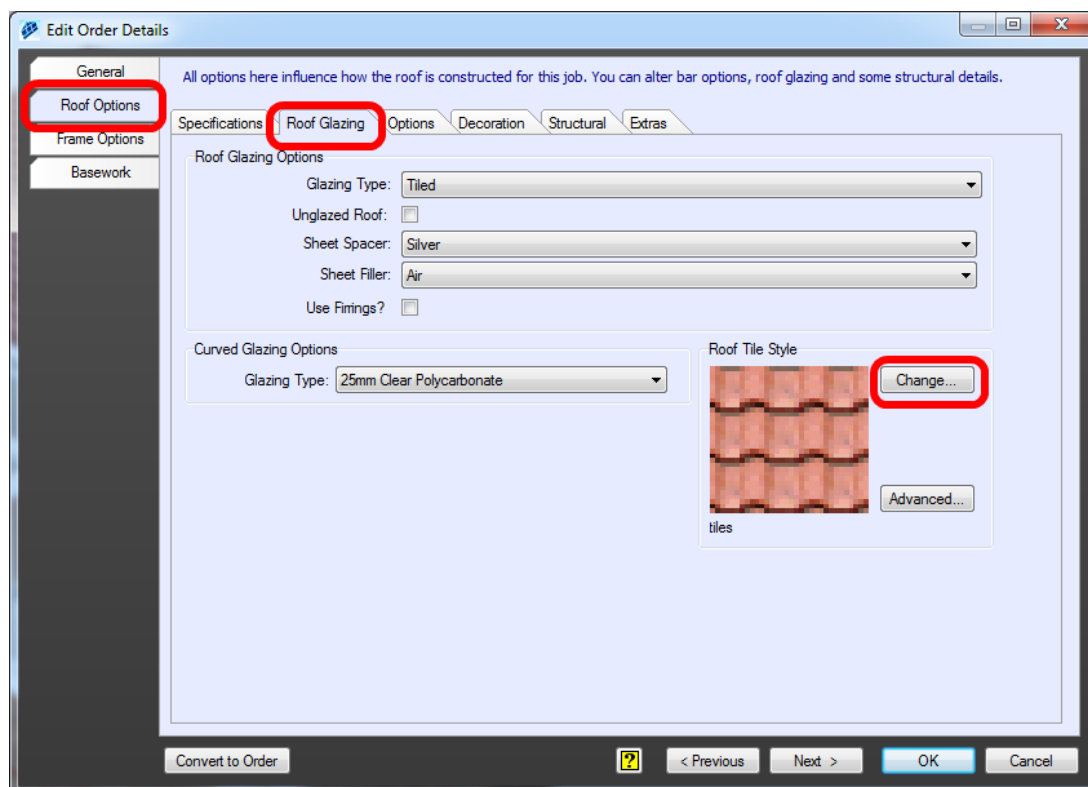
7. To change the tile type first click on the [Home](#) tab.



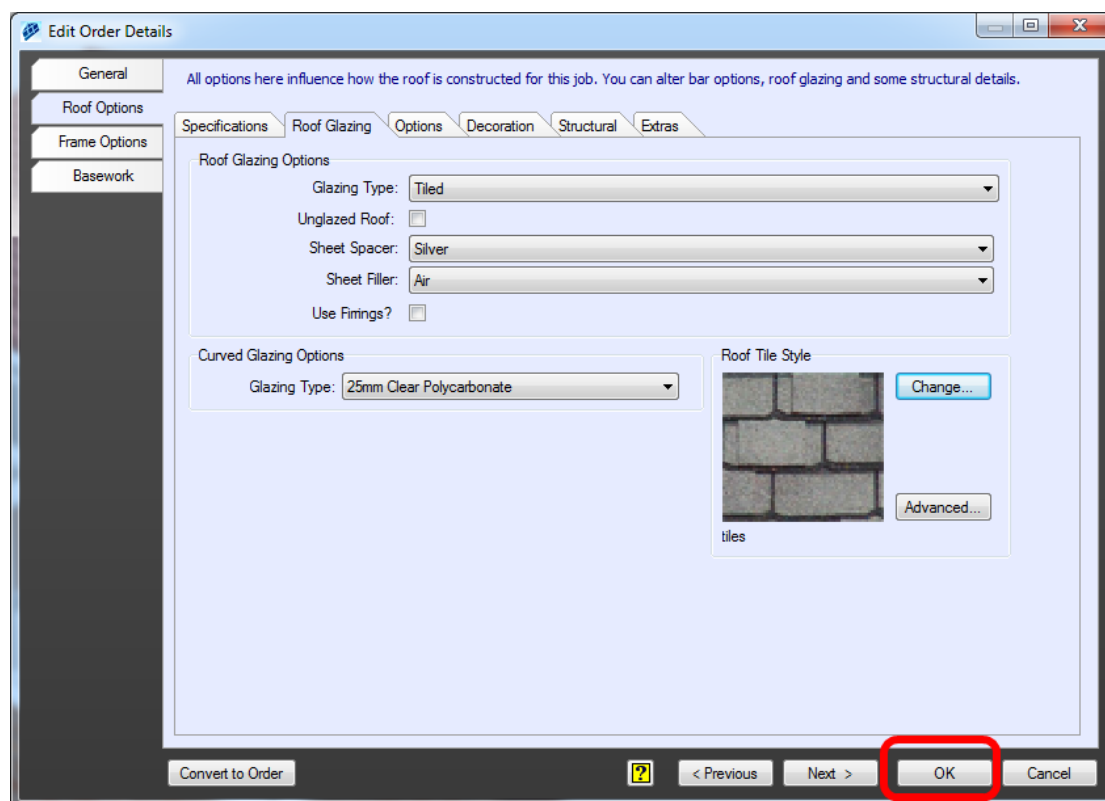
8. Next click on [Order Details](#).



9. Select the **Roof Options** tab then the **Roof Glazing** tab. To amend the roof tiles click on **Change** button and select the tile you require.



10. Click on **Ok** to finish.





Please contact UDesign Support if you need any help.

UDesign Support

0161 441 3333

UDesignSupport@rpssoftware.co.uk