

UDesign Customer Release MAY/JUNE 2018

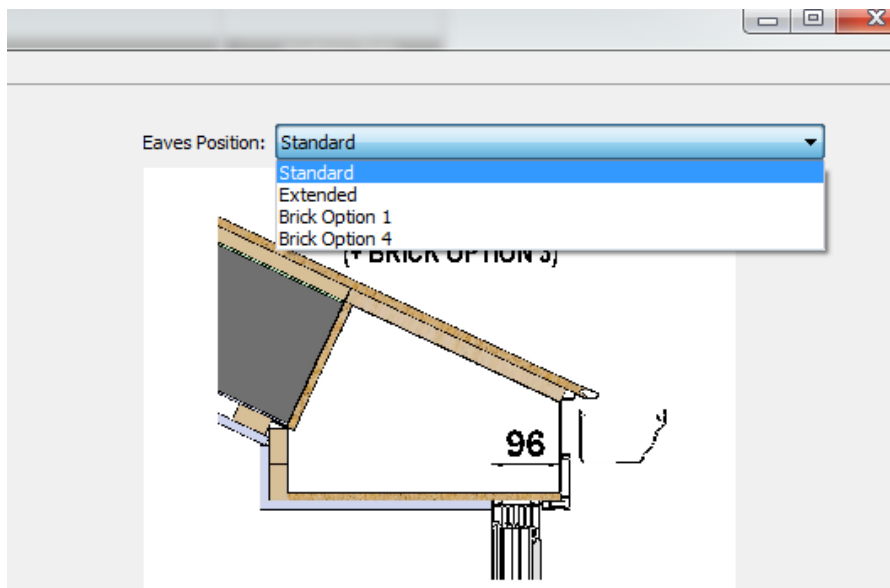
UltraRoof 380 System

UDesign Enhancements

- Gutter across gable fronts (lean-to and full ridge)
- Cornice now available
- U380 Valley jobs now available for specification/pricing within UDesign
- New Eaves Positions
- Soil Pipes cut-outs added to the system
- Gable overhang for soffit

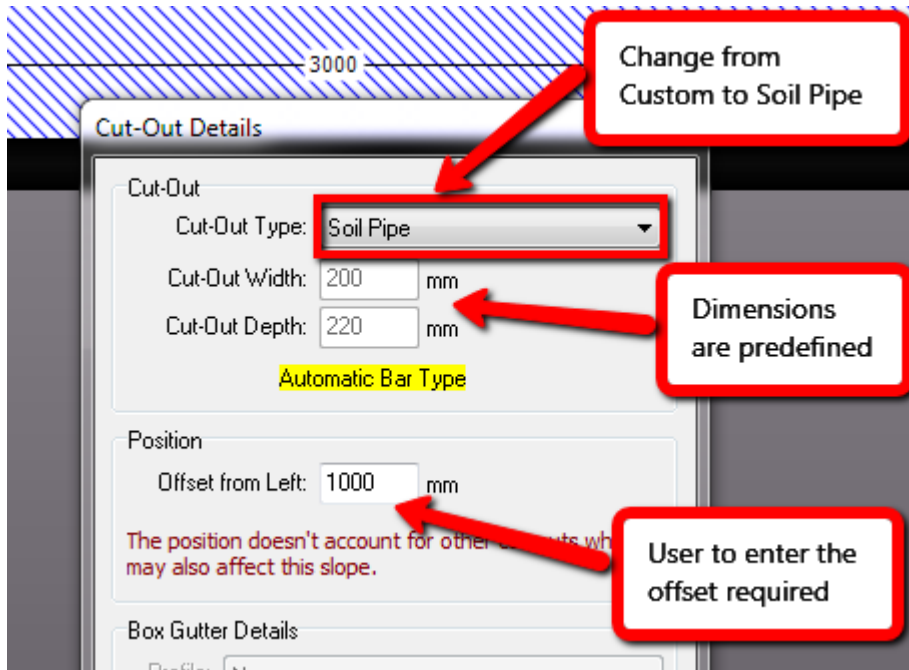
New Eaves Positions

- In the Ultraframe tab of UDesign, click on the UltraRoof button
- When the window opens click on the UltraRoof tab
- Click on the Eaves Position drop-down and select your preferred option

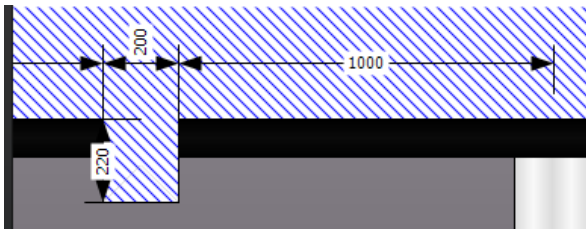


Soil Pipe Cut-Outs

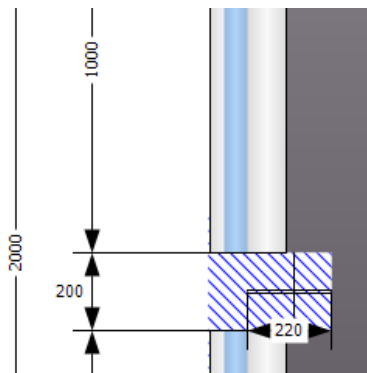
- Select the Wallplate or Starter Bar and select Cut-Outs
- Change Cut-Out Type from Custom to Soil Pipe using the drop down
- Dimensions are predefined
- User to enter the offset required



Wallplate

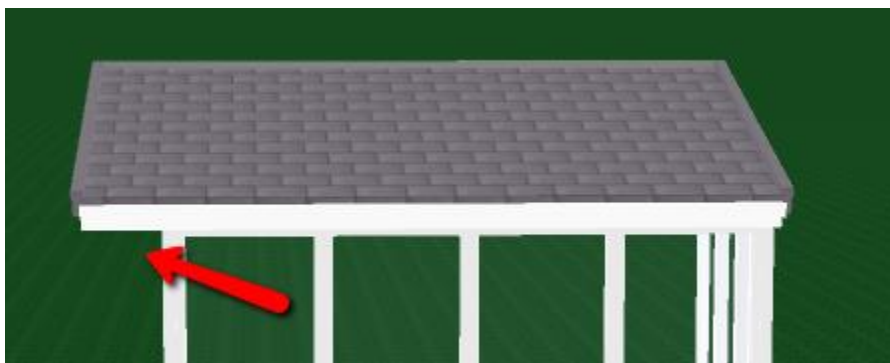
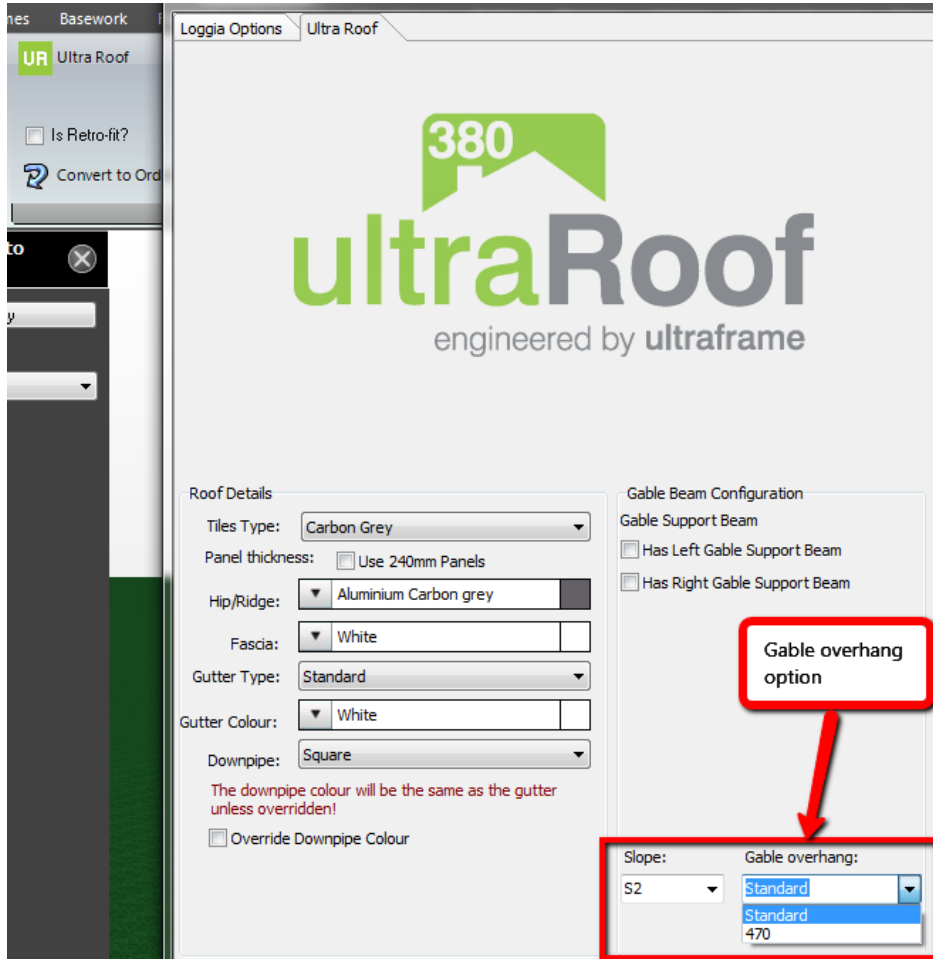


Starter Bar



Gable Overhang

- In the Ultraframe tab of UDesign, click on the UltraRoof button
- When the window opens click on the UltraRoof tab
- Select the slope(s) that you wish to change
- Click on the Gable overhang drop-down and change to 470



UDesign Fixes

- Gutter type option in the UltraRoof wizard now links to the Gutter kind in Order Details

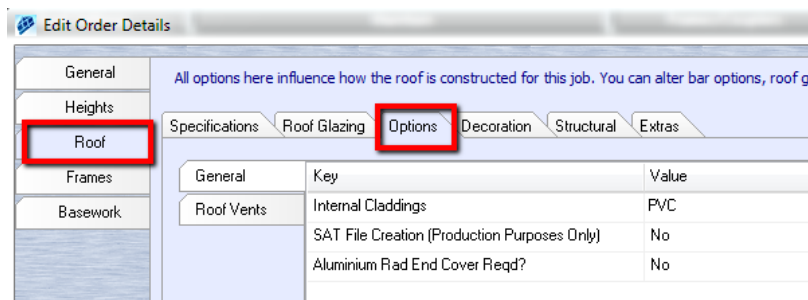
UltraSky Lantern

UDesign Enhancements

- UltraSky confirmation report now includes external kerb information and external kerb sizes
- Aluminium Rad End Cover (LAN036) has been moved from the Ancillaries tab in to Order Details under the Roof Options tab. This is so the part can be defaulted as an option.
- Bespoke Colour Options now added to the UltraSky Lantern roof system

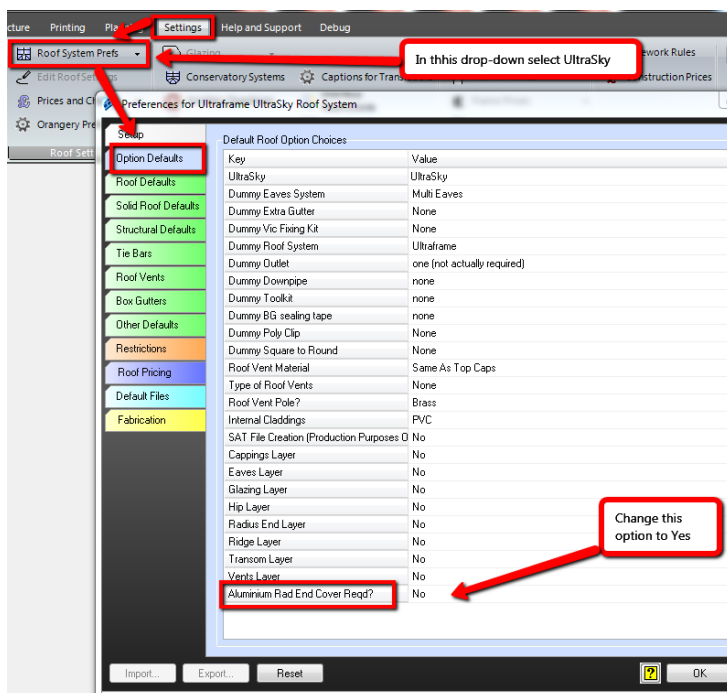
Aluminium Rad End Cover

- To select the Aluminium Rad End Cover you need to go in to Order Details
- Click on the Roof tab, then the Options tab and then the General tab



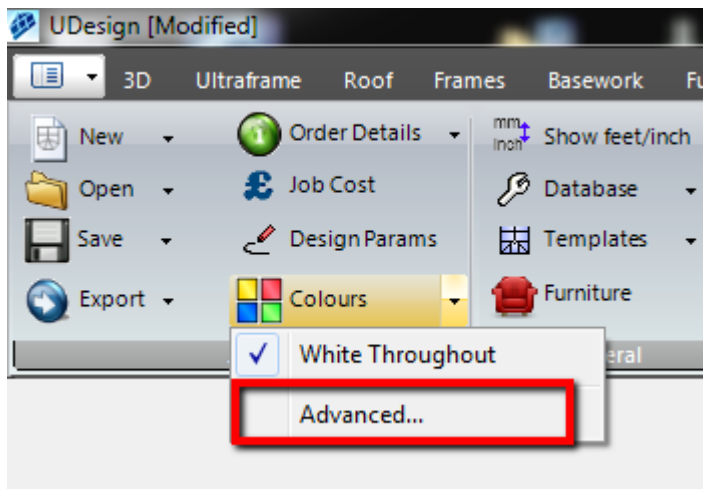
Default Aluminium Rad End Cover to Yes

- Open UDesign
- Click on the Settings tab
- Click on the Roof System Prefs drop-down and select UltraSky
- In the new window click on Option Defaults and change to YES

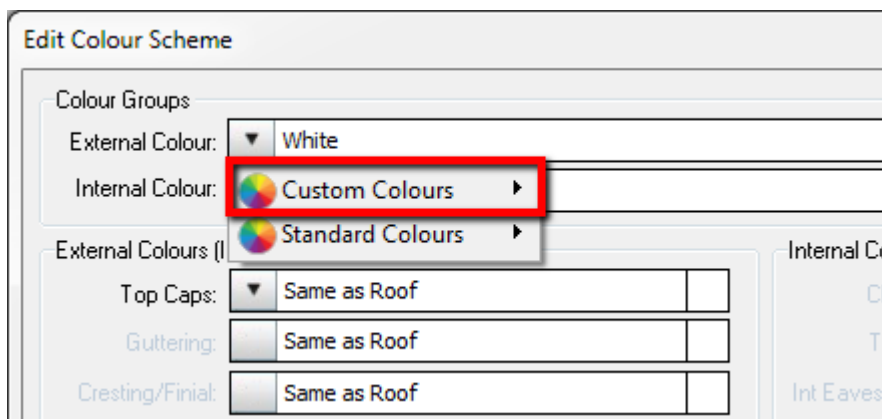


UltraSky Bespoke Colour Options

- Click on the Colours drop-down



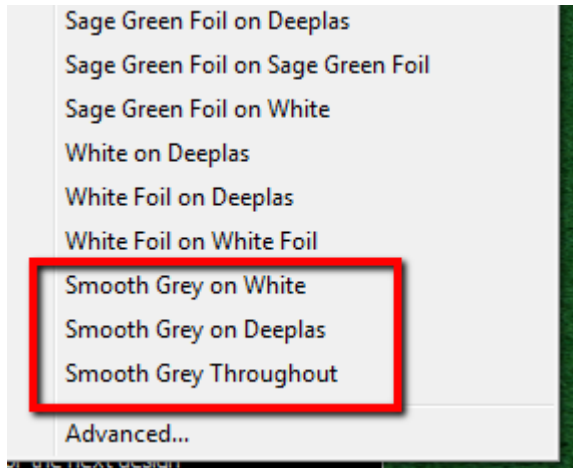
- A new window will open where Custom Colours are now available



Classic System

UDesign Enhancements

- Smooth Grey finish added (non-grain) and are located in the Colours menu



UDesign Fixes

- Fixed the 3D visual for Soffit Box Gutters

Ancillaries

Additions

- Frame Stiffeners
- Corner Posts for 130 degree angles
- Corner Posts for 150 degree angles

Amendment

- Some Roof Fans have been removed from the Ancillaries as they are no longer available

LivinRoof System

UDesign Fixes

- Hip label incorrectly stating 7MLR changed to show 7LR

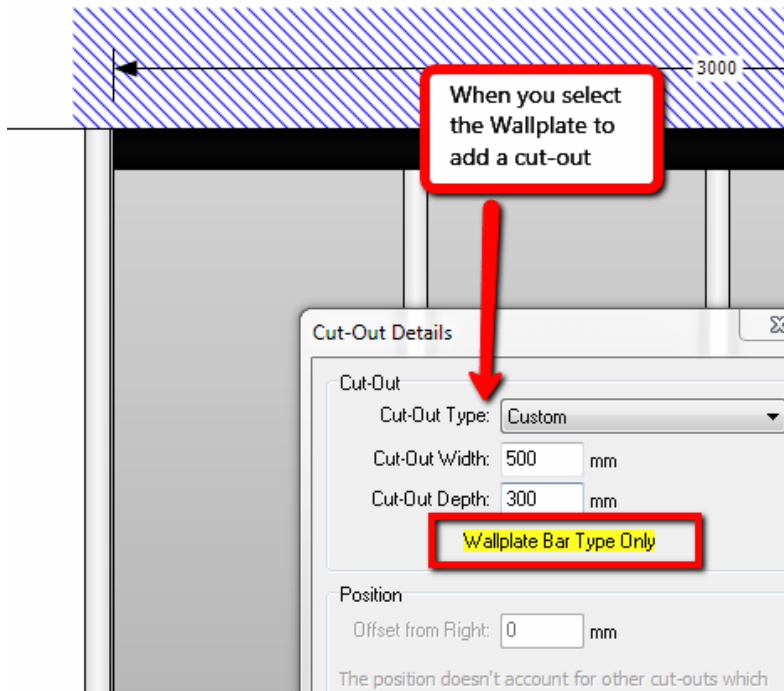
General

Cut-outs

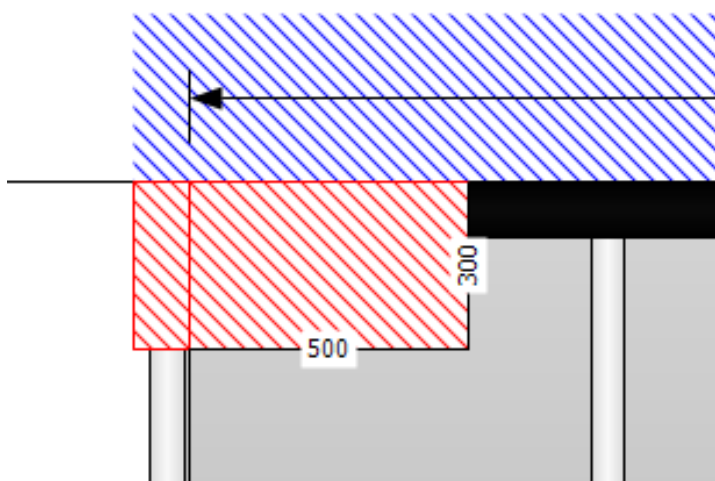
Enhanced cut-out functionality

It is important to know that when adding a cut-out from the Wallplate it will **ALWAYS** be a Wallplate cut-out.

- Select the Wallplate and add a cut-out, you can see highlighted "Wallplate Bar Type Only"

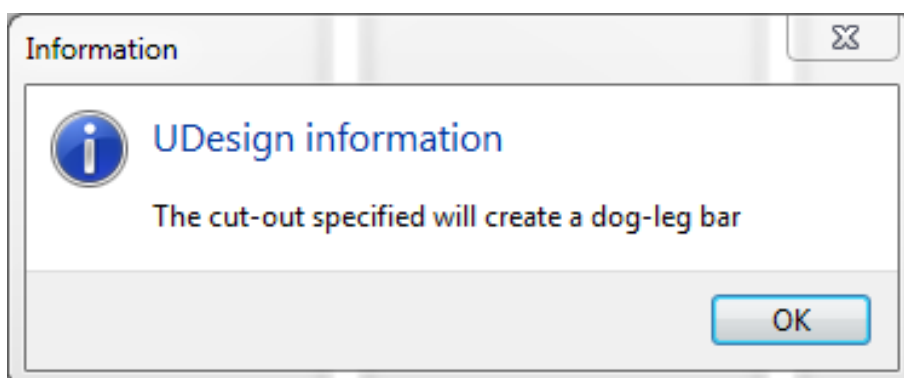
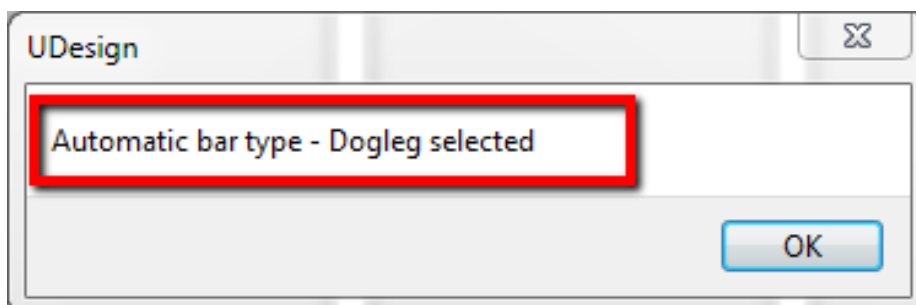
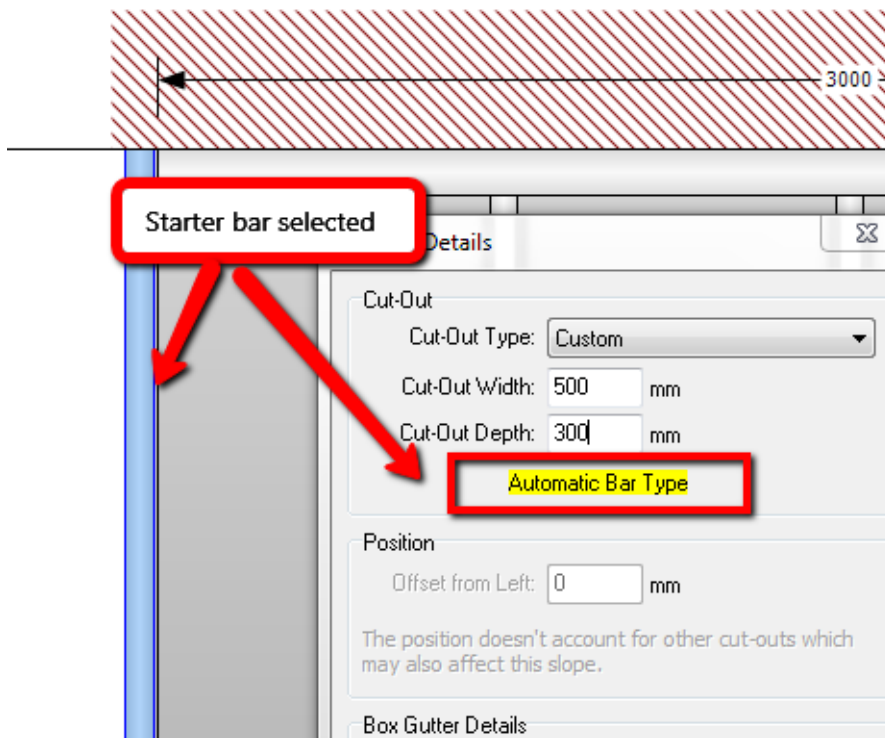


- Once you have entered your dimensions, click OK



When adding a cut-out from a Starter Bar it will be a Dog-Leg up to 400mm and after that it will be a Wallplate cut-out.

- Select the Starter bar and add a cut-out, you can see highlighted "Automatic Bar Type"
- If you input a Cut-Out Depth of 400mm or less a Dog-Leg will be created



- If you input a Cut-Out Depth over 400mm a Wallplate will be created

